

UP FOR
UNEXPECTED

TOWNSVILLE
NORTH QUEENSLAND



Townsville North Queensland

Townsville North Queensland is a place where all of Australia's most **iconic landscapes merge**. From the awe of the outback, to the magic of the Great Barrier Reef. Discover the wonder of the rainforest or enjoy **endless summer days** on a tropical island.

Immerse yourself in unspoilt nature, uncover your very own perfect paradise in Townsville North Queensland, and meet the **local characters** who call this place home. This is a place where **active minds** explore and dive deeper, it is here you can leave more than just footprints, it's where you can **leave your legacy**.

Townsville Enterprise is a not-for-profit organisation and is the official Regional Tourism Organisation (RTO) and economic development body of the Townsville North Queensland region, extending from the Burdekin to the Hinchinbrook, west to Charters Towers, and including the central section of the Great Barrier Reef and its island communities of Magnetic Island and the Palm Island group. In the spirit of reconciliation, Townsville North Queensland and Townsville Enterprise acknowledges the Traditional Custodians of country throughout our region and Australia and their connections to land, sea and community. We pay our respect to their elders past and present and extend that respect to all Aboriginal and Torres Strait Islander peoples today.



About

WEATHER

Pack for warm weather - expect warm summers and mild winters in Townsville North Queensland, with over 300 sunny days every year.

When it comes to what to wear, casual, lightweight clothes are reliable. But no matter what time of year, a hat, sunglasses, and sunscreen are always recommended alongside a long-sleeve shirt to protect you from the state's strong UV rays.

AVERAGE TEMPERATURES

The average climate in Townsville North Queensland is typically a tropical 28 degrees.

Summer (December-February): 25°C to 30°C

Autumn (March-May): 18°C to 30°C

Winter (June-August): 14°C to 25°C

Spring (September-November): 18°C to 30°C

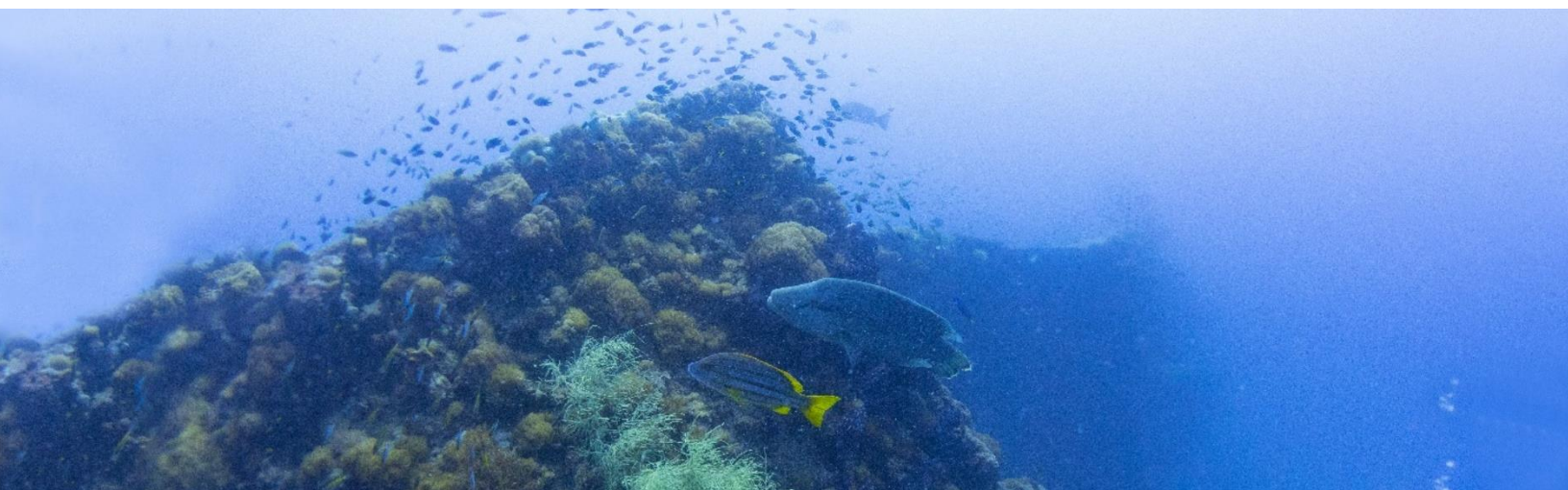
WILDLIFE

Home to a diverse ecosystem of wildlife - on land, and in our coastal waters, here are a few tips to make your interaction with our furry, feathered, and scaly friends an educational, and safe one!

- Keep your distance (unless on a tour with an accredited Ranger/handler) - our furry friends (koalas and rock wallabies to name a few) look cuddly but need their space. Admire from afar and make the most of your zoom setting on your camera!
- Feeding wild animals - best to keep your snacks for you and leave our critters to find their own lunch.
- Stinger season occurs every year from November to April - best to swim in stinger net zones or wear a stinger suit.
- Be Shark Smart and Crocwise when visiting our coastal waters to have a safe swim and experience!

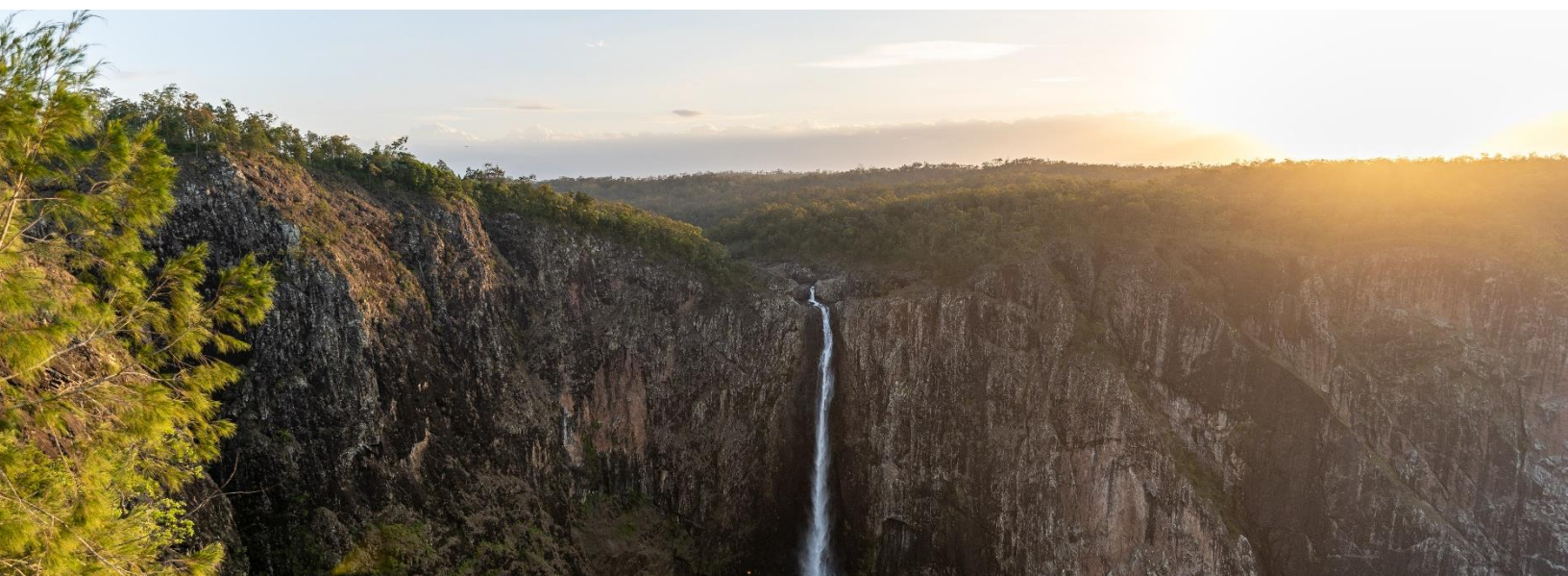
More travel information

<https://www.townsvillenorthqueensland.com.au/plan-your-visit/travel-information/>



INTERESTING FACTS

- Townsville is the sunshine capital of the state with more than 320 sunny days each year.
- With a thriving regional population of almost 300,000 Townsville is the largest city in Northern Australia.
- Magnetic Island is a must visit as the home to Northern Australia's largest colony of koalas.
- Magnetic Island offers 24km of walking trails and 23 beaches and bays. Two thirds of the island is considered national park and with its own postcode in the middle of the Great Barrier Reef, Magnetic Island is one of Queensland's most accessible islands, just a 20-minute ferry ride from Townsville CBD. The island is also the discovery location of the global natural phenomenon of coral spawning.
- For epic waterfalls you can't go past Wallaman Falls, at 268m tall it is Australia's largest sheer drop waterfall.
- Townsville is situated between two UNESCO World Heritage listed ecosystems – the Great Barrier Reef and Paluma Rainforest.
- Townsville North Queensland played an integral role in the Battle of the Coral Sea and World War II as the base for more than 50,000 American and Australian troops.
- Reef HQ Great Barrier Reef Aquarium is the largest coral reef exhibit in the world, made up of 2.5 million litres of water and housing 150 species of reef fish, a variety of sharks, turtles, crocodiles, crabs and many other under water inhabitants (currently closed for renovations).
- The SS Yongala Wreck situated off the coast of Ayr sunk in 1911 and is now one of the world's top 10 dive sites. The site is home to a spectacular array of coral and marine life including sea turtles, giant rays, whales, sea anemone and thousands of reef fish.
- Townsville is the research hub of the Great Barrier Reef housing the headquarters of the Australian Institute of Marine Science, the Great Barrier Reef Marine Park Authority and James Cook University.



SOCIAL MEDIA HANDLES

If you are sharing any photos on social media from your journey in Townsville North Queensland please use the following social media handles:

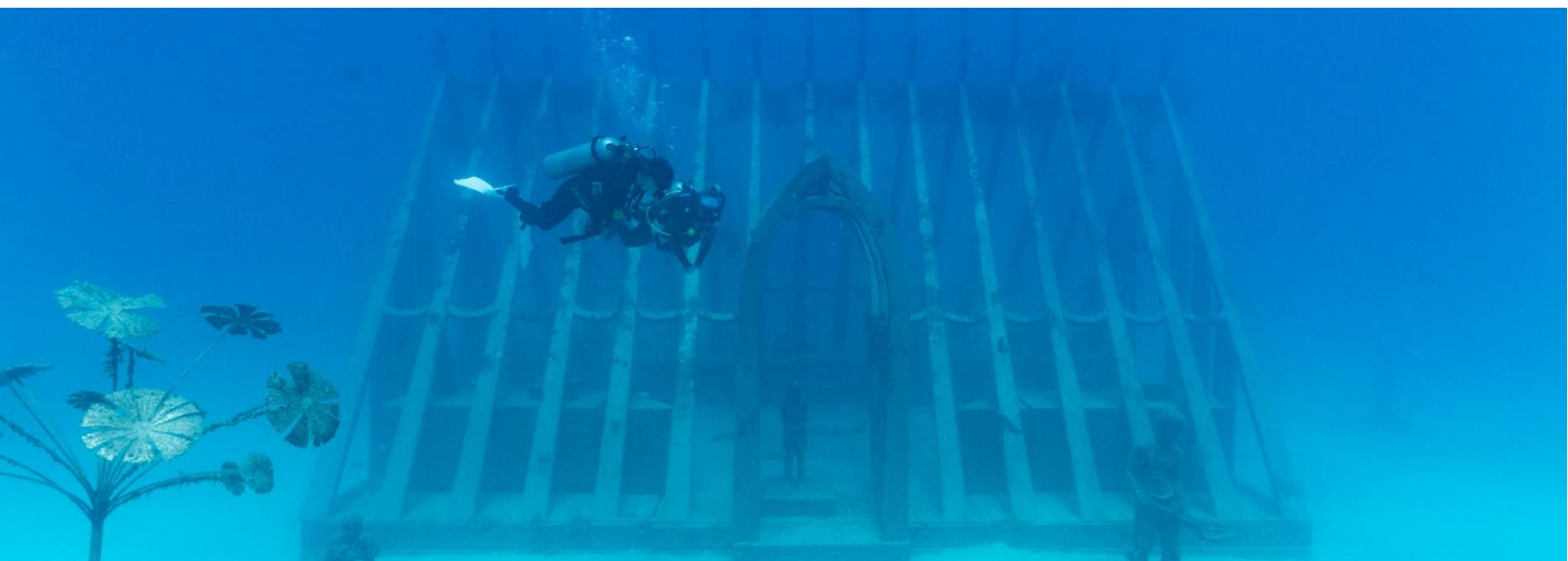
- **#townsvillenorthqueensland | #upforunexpected**
- **#thisisqueensland**
- **#seeaustralia**
- #hinchinbrookway (Hinchinbrook)
- #thisismagneticisland (Magnetic Island)
- #unearthoursecrets #charterstowers (Charters Towers)
- #visitburdekin (Burdekin)
- @TownsvilleAus (Twitter)
- @TownsvilleNorthQueensland (Instagram)
- @Queensland

YOUR CONTACT

Megan Hawke

Tourism Executive | Townsville Enterprise

E: megan.hawke@tel.com.au P: 0448 011 036



Option One – From \$295 p/p

SUNDAY 5 NOVEMBER	
6:30am	Transfer to Breakwater Marina
7:00am	<p>Great Barrier Reef + Museum of Underwater Art Day Trip</p> <p>The Museum of Underwater Art (MOUA) is surrounded by the reef with the bright and beautiful colours a perfect backdrop and the location providing balance to man-made and nature's art. As the first of its kind in the Southern hemisphere, MOUA will act to highlight reef conservation, restoration, and education on a global scale. The site located on the northern end of John Brewer Reef is rich in history, with a strong connection to our Indigenous culture.</p> <p>YOUR TOUR INCLUDES:</p> <ul style="list-style-type: none"> • A visit to world-class Museum Of Underwater Art (MOUA) • Reef Ecology talks to enhance your experience • Demonstrations and snorkeling instructions on snorkeling techniques and in-water assistances • All snorkeling equipment (mask, snorkel, fins and full length suit) • Floatation devices like noodles, jackets and life rings • Iced water, cordial, tea and coffee throughout the day • Morning Tea, Buffett Style Lunch and Afternoon Tea • MOUA and Mooring fees <p>WHAT TO BRING:</p> <ul style="list-style-type: none"> • 1 small bag with your clothes and toiletries, • Swimsuit and towels (no towels provided on board) • Sunscreen, hat and coat <p>If taking Sea Sickness tablets please take the night before your trip.</p>
4:45pm	Transfer back to Accommodation
	Accommodation – Rydges Townsville, Palmer Street

Option Two – From \$189 p/p

SUNDAY 5 NOVEMBER	
7:15am	Transfer to Breakwater Terminal - Sealink
7:45am	Ferry to Magnetic Island
8:30am	<p>Magnetic Island Eco Discovery Tour</p> <p>Discover the beauty of Magnetic Island from above and below the water as we share with you our Island home, we are all about the WOW moments! Relax as you take in the beautiful surroundings, swim, snorkel, discover and a whole lot more....</p> <p>YOUR TOUR INCLUDES:</p> <ul style="list-style-type: none"> • Snorkelling 2 special locations • Morning tea in a stunning secluded beach/bay • Interaction with marine & wildlife friends • Marine & reef education • Friendly commentary on the history and environment of Magnetic Island and some stories to share • Friendly and experienced crew • Tea/coffee, refreshments, sweet morning tea and fruit platter • All equipment for snorkelling, fun fishing, water activities <p>WHAT TO BRING:</p> <ul style="list-style-type: none"> • Camera • Bathers & Towel • Sunscreen & Hat • Water bottle and any other snacks you wish
1:30pm	<p>Lunch at Peppers Boardwalk Restaurant</p> <p>*Not included in price</p>
3pm	Ferry to Townsville
3:30pm	Transfer to Accommodation